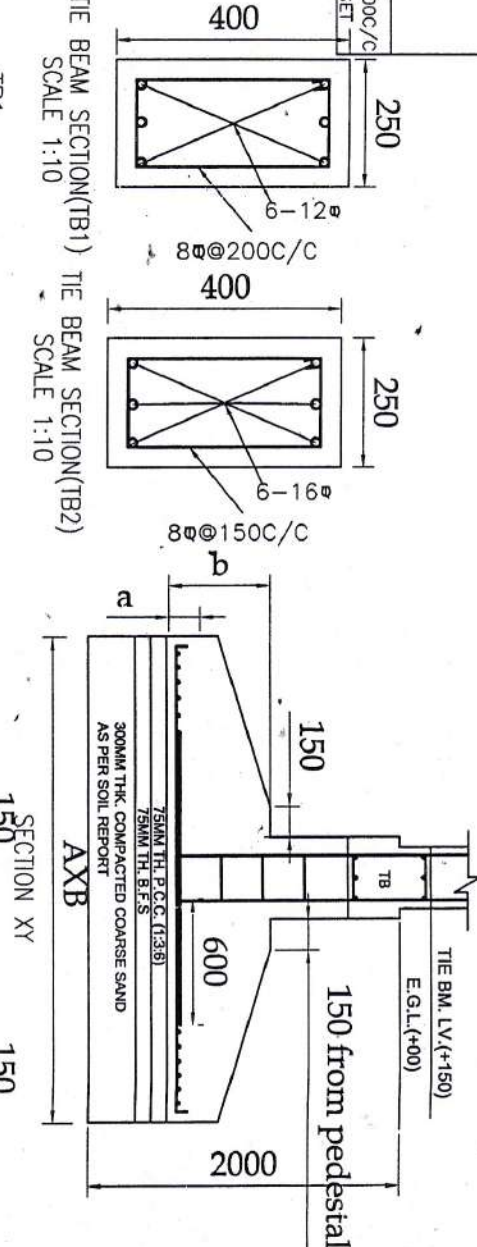
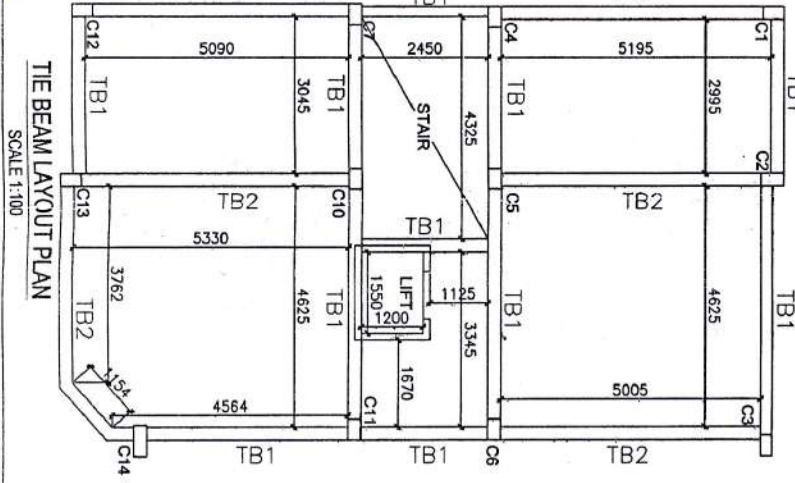
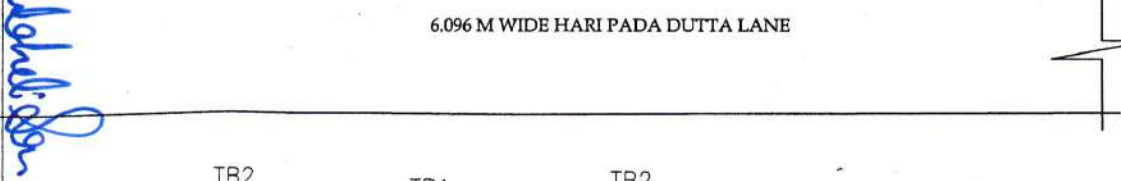
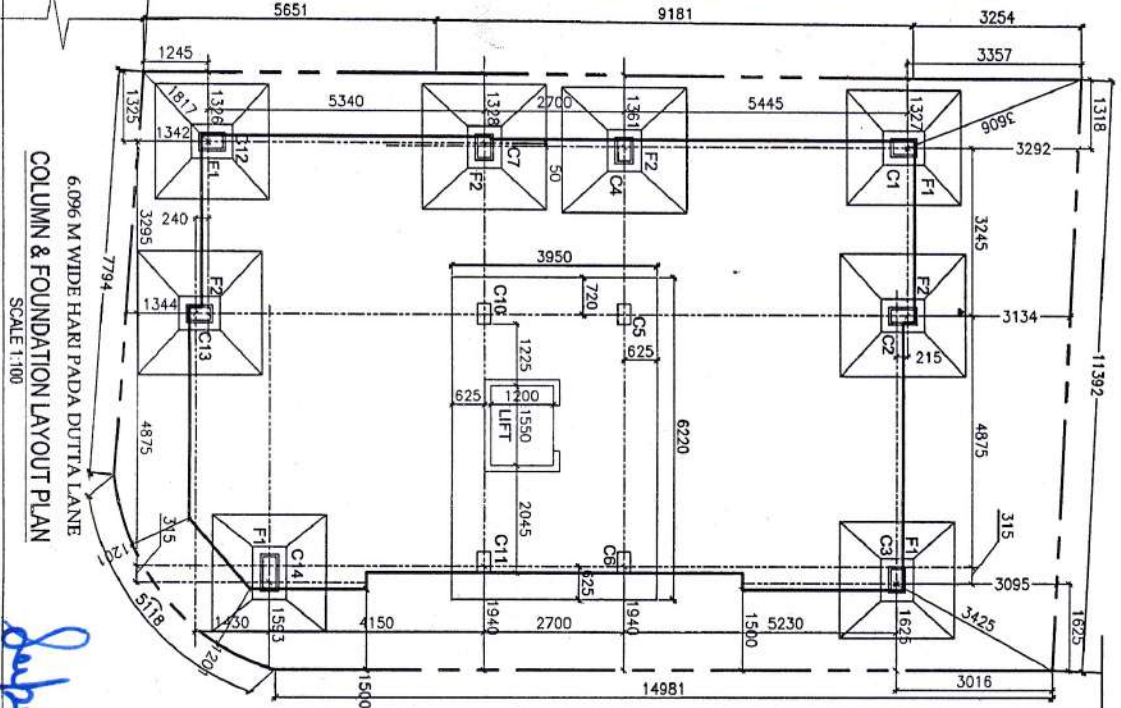


COLUMN GROUP	COLUMN NO.	GR.F./ST.F.	2ND	3RD	PEDESTAL	LINK UP BAR
I	C1, C12	250X400	250X400	250X400	350X500	8 @ 200C/C
II	C4, C6, C7, C11, C13	250X400	250X400	250X400	350X500	8 @ 200C/C
III	C4, C6, C7, C11, C13	250X450	250X450	250X450	350X550	
IV	C3	225X400	225X400	225X400	325X500	
V	C2	250X440	250X440	250X440	350X540	
VI	C14	250X600	250X600	250X600	350X700	8 @ 200C/C 2 PER SET

FOOTING TYPE	SECTION AXB	DEPTH b to d	REINFORCEMENT
F1	2200X2200	450 TO 200	10 @ -100C/C B/WAYS
F2	2400X2400	450 TO 200	10 @ -100C/C B/WAYS

- 1) ALL DIMENSIONS ARE IN MM.
- 2) GRADE OF CONCRETE M20
- 3) GRADE OF STEEL Fe 415
- 4) COVER AGAINST MAIN REINFORCEMENT
- 5) LAP LENGTH
- 6) SLAB BEAM=50X DIA. OF BAR
- 7) BEARING CAPACITY OF SOIL IS TAKEN AS 7.5 TISOM.



PLAN OF G+III STORIED (12.425 MT HEIGHT) RESIDENTIAL BUILDING AT PREMISES NO. 60/48, HARIPADA DUTTA LANE, KOLKATA-700 038, P.S - JADAVPUR, WARD NO. 94, BOROUGH NO. X, SCALE - 1 : 100 DATE : 04.07.2023

DRG. NO.-60/48, HARIPADA/WD/ST-01/R-01

TITLE- FOUNDATION & DETAILS PLAN

